

Utah Food Bank
Annual Report
2010



UTAH FOOD BANK



A message from



UTAH FOOD BANK

our leader.



JIM PUGH

CHIEF EXECUTIVE OFFICER, UTAH FOOD BANK

With our capital campaign in full swing, we moved to our new home in 2009. With unyielding focus and determination, our board and capital committees, employees and staff have rallied to foster support from friends and partners within the community securing \$10 million toward our \$11.4 million goal.

Our new 86,000-square-foot distribution center, the Commodity Surplus Food Program, and the expansion of the Mobile Food Pantry resulted in a significant increase in distribution for 2010. While we were able to provide more food to more needy families this year, we realize that our work is never done. We will continue to improve our services and respond to the emergency food needs for the people of Utah.



Local Commercial Donations

Donations from local food producers, growers, household product manufacturers and transportation companies are categorized as commercial donations. Donors will often contact Utah Food Bank to arrange for pick-up of product that is overstocked, close to expiration, has a packaging/marketing error, or is slightly damaged.

National Commercial Donations

Utah Food Bank receives donations from national food growers and manufacturers through our relationship with Feeding America. Feeding America is a network of more than 200 food banks that serve nearly every county in the United States. Donations received via Feeding America are low- or no-cost and provide Utah Food Bank access to food from across the country.

Purchased Food

Financial donations can be made using traditional means or through Utah Food Bank's website (The Virtual Food Drive). These contributions are used to purchase "most needed" food items and turkeys during the Holiday Food Drive. Every effort is made to procure food at the lowest possible price. This is done by purchasing in bulk—sometimes by the truckload.

Food and Fund Drives

Community Food and Fund Drives are an essential source of donations. UFB engages the community-at-large asking for specific, healthy food choices such as peanut butter and tuna fish. As well, we ask the community to donate funds to assist UFB in purchasing healthy food choices utilizing our buying power. For every \$1 donated, we are able to turn that into \$7 worth of goods and services. Another great new recourse is our virtual food drive, which allows persons to donate money to purchase specific food items at discounted rates. UFB has five major food drives to help us keep shelves stocked year-round: Scouting for Food, Letter Carriers, Summer Business Food Drive, Hunger Action Month Food Drive, and the Holiday Food Drive.



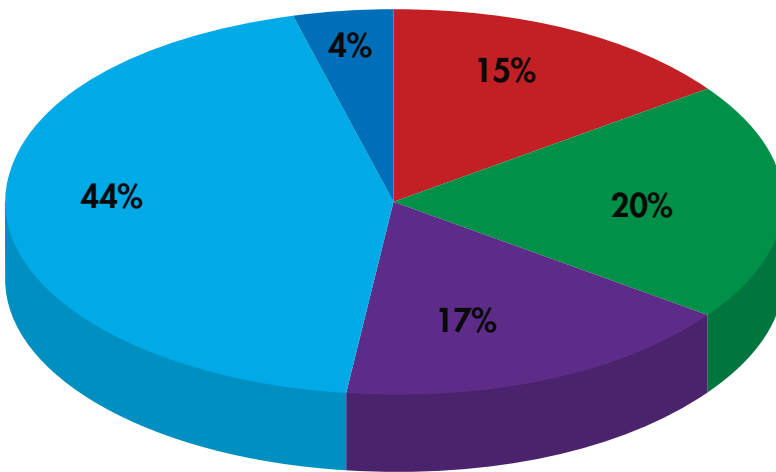
Grocery Rescue 2010

Since 2006, the Utah Food Bank Grocery Rescue program has experienced tremendous growth and success. In FY10, the program has continued to experience the same. Even though only 14 new stores were added to the existing statewide program in FY10, more than 7.77 million pounds of food was collected; an increase of 170% from 2009. Food Bank representatives agree that the donations as a result of the Grocery Rescue program have a significant impact on the day-to-day operations of Utah Food Bank, partner agencies and food pantries and recipients of the food donations. Grocery Rescue donations now represent 25% of all food donations to Utah Food Bank, and the program is continuing to grow. So what do Grocery Rescue donations mean for the state of Utah?

One only need mention the obvious economic condition of our nation over the past several years. Right now, food and gas prices as well as unemployment are higher than they have been in the last 30 years. As families continue to struggle to make ends meet, more people have to rely on emergency food assistance to survive. To compound this issue, the downturn in the economy is forcing food manufacturers and producers to tighten their belts as well. The years of surplus production that historically has turned into donations is a thing of the past. So, at the same time people are in need, the ability for food banks to secure commercial food donations has declined. Utah, however, due to the Grocery Rescue program, has been able to meet the increased need. Utah Food Bank has continued to provide sufficient quantities of food, including healthy, fresh and frozen retail items that are most used in Utah homes. The timing of the Grocery Rescue program growth could not have been better. The gap created in most states, including Utah, between the increased number of people in need of assistance and available food has been bridged due to the nearly 8 million pounds of additional food donations going directly to those in need. The success of the program could not be achieved without the wonderful support from our Utah retailers and their commitment to fighting hunger in Utah.

How donations are proportioned

United Way	\$318,819.50	3.97%
Government	\$1,207,302.34	15.04%
Grants/Foundations	\$1,647,000.06	20.52%
Corporations/Sponsorships	\$1,332,032.66	16.59%
Individual Donations	\$3,523,184.96	43.88%
	\$8,028,339.52	100.00%



- United Way
- Government
- Grants/Foundations
- Corporations/Sponsorships
- Individual Donations



Sponsorship Support

ARW Engineers
Axis Architects
Carrier Transicold of Utah
The Church of Jesus Christ of Latter-day Saints
Codale Electric Supply Inc.
Davis County Auditor's Office
EnergySolutions
EnergySolutions Arena
FFKR Architects
Fidelity Investments
Phillip and Heather Goold - Utah Human Race
Great Salt Lake Council - Boy Scouts of America
HKS Inc.
IHOP
IKON Office Solutions, Inc.
Industrial Supply Company, Inc.
Jiffy Lube - Utah
KeyBank Corporate
Lefavor Envelope Company
McJunkin Red Man Corporation
NAPA Auto Parts
NAPA Salt Lake City Distribution Center
Richard H. Ostler
P&G Fund of The Greater Cincinnati Foundation
Quality Tire Company
Questar Corporation
Regence
Riverton Motors Group
Salt Lake County Jr. Livestock Council
Siegfried & Jensen
Smith's Management Corporation
VCBO Architecture
Vivint
Wagner Packaging Solutions
Wells Fargo

*Sponsorship Support list reflects
contributions from July 1, 2009 – June 30, 2010.*



Top 50 Food Drives

	Name	Pounds
1.	Boy Scouts of America	507,447
2.	National Association of Letter Carriers	359,496
3.	Alliance For Unity	196,007
4.	Jiffy Lube	109,856
5.	Harmos	108,330
6.	Smith's	52,523
7.	Salt Lake Community College	22,693
8.	University of Utah Health Care	20,826
9.	Brighton Ski Resort	18,104
10.	University of Utah Alumni Association	16,314
11.	Discover Card	15,126
12.	Park City Turkey Drive	14,446
13.	Overstock.com	13,896
14.	Salt Lake County Library Svcs	11,970
15.	Disney on Ice	11,756
16.	America First Credit Union	10,410
17.	Salt Lake City Library	10,280
18.	Alta High School	9,613
19.	Fort Herriman Middle School	9,610
20.	Macey's - Sandy	9,432
21.	Foothills Elementary	9,348
22.	Bonneville Jr. High	8,674
23.	JC Penney	8,136
24.	Curves for Women	7,770
25.	Ebay Inc.	7,330
26.	Kid Power	7,169
27.	BD Medical	6,668
28.	UnitedHealth Group	6,632
29.	Lone Peak Stake	6,264
30.	Dilworth Elementary	5,400
31.	Snowbird Resort	5,252
32.	Albion Middle School	5,142
33.	Elk Ridge Middle School	5,091
34.	Ultradent Products	4,798
35.	Draper Elementary	4,761
36.	Regence Blue Cross Blue Shield	4,666
37.	Frito Lay Inc.	4,503
38.	Utah Apartment Association	4,394
39.	William Rudman	4,370
40.	Select Portfolio Servicing	4,259
41.	East High School	4,188
42.	Intermountain Medical Center	4,051
43.	American Equipment	4,038
44.	Butler Middle School	4,032
45.	Skyline High School	3,891
46.	Olympus Jr. High School	3,814
47.	Waterford School	3,600
48.	VCBO Architects	3,414
49.	Roofers Supply	3,388
50.	Robert L. Williams	3,330



Top 50 Fund Drives

University of Utah Alumni Association
Zions Bank
Fidelity Investments
C.R. England
Utah State Employees Charitable Fund
U of U Hospital & Clinics
Van Cott, Bagley, Cornwall & McCarthy
Utah Bar Association
Varian Associates
Ultradent Products Inc.
Software Technology Group
ARUP
Riverton Motors Group
Utah Retirement Systems
Questar Corporation
Cottonwood Title Insurance Company
Weight Watchers
Coldwell Banker Residential Brokerage
Nelson Laboratories Inc.
Jordan River Construction
Cache Valley Electric
Datamark
Energy Solutions
Roofers Supply Inc.
Chevron Salt Lake Refinery
BD Medical Systems
Sheet Metal Contractors Association
Parley's 7th Singles Ward
SCS Inc.
Select Portfolio Servicing, Inc.
Oakridge Elementary
Bard Access Systems
Wells Fargo Equipment Financial
Utah Highway Patrol/Public Safety
Golden Braid Oasis Café, LLC
Sizzling Platter Inc.
Utah Board of Regents
Utah Drivers License Division
SOS Staffing
Layton High School
Goldman Sachs
Ray Quinney & Nebeker
Holland & Hart
Kern River Gas Transmission
State of Utah, Dept of Administrative Services
Swire Coca-Cola, USA
Rock for a Remedy
Utah Special Education Consortium
University of Utah - Otolaryngology Division
Barry Equipment Company

Commercial Donors

Donors	Pounds
Walmart	3,536,624
Smith's	1,636,031
Albertsons	1,538,495
Associated Foods	1,260,013
(CP Industries) Help A	
Friend Foundation, LLC	1,022,050
The Dannon Company, Inc.	972,216
Sam's Club	929,756
Malt o Meal	883,801
Pepsi Cola	754,098
LDS Church Total	728,260
Sun Products	707,438
Dickinson Frozen Foods	425,125
Columbia Fresh Produce	361,488
Kellogg Company	313,745
Harmons	294,357
Target	293,138
Coca-Cola North America	285,564
Kraft	277,134
AG Against Hunger	276,143
Sysco Intermountain	276,032
Nestle Usa, Inc.	268,769
Ice Rok Water	263,412
Con Agra	234,389
Peak Distribution	178,976
Utah Department of Health	176,679
General Mills, Inc.	170,449
White Wave Foods	162,662
Abbott Nutrition	156,575
St. Mary's Food Bank Alliance	145,066
Winco	144,798
Adams Produce LLC	142,250
Dans	141,271
Lofthouse	132,487
Ralcorp-Lofthouse	124,773
A & Z Produce	124,274
L & M Companies	122,000
Western Veg & Produce Inc.	115,743
2nd Harvest Inland Northwest	111,433
Costco	110,274
Blaine Hartley	108,843
Three Square Food Bank	87,416
Stone Ground Bakery	87,285
Reckitt Benckiser	87,145
Yuma Community Food Bank	82,127
Indulgent Foods	73,567
Lamb-Weston	72,486

Donors	Pounds
Nutrisystem	71,834
Idaho Food Bank	69,264
Montana Food Bank Network	68,738
Moroni Feed & Poultry	65,437
Chris Karen Farms	59,832
Winder Dairy	58,740
Frito Lay Inc.	57,198
University of Utah	52,841
Winegars	51,190
Food Lifeline	50,013
Quaker-Tropicana-Gatorade	48,481
Whole Foods Market	48,110
Wadsworth Bros Construction	48,000
Johnson & Johnson	47,520
Martinellis & Co.	47,198
Swift Transportation	45,872
Shriners Hospital	44,543
Heinz North America	44,261
Feed The Children	43,835
Seneca Foods Corp.	43,670
Pride Transport	41,869
Associated Product Recovery	40,658
NPS	39,919
Fresh Logistics, Inc.	38,874
Dr. Pepper Snapple Group	38,094
Oakdell Egg Farm	37,440
Seashare	37,240
Smithfield Packing	35,941
Association of Arizona Food Banks	35,862
Mars Snack Food US	34,938
Doug Andrus Dist.	31,314
Blue Chip Group	30,942
Unilever	30,416
Larry H Miller	29,456
Uncle Ben's, Inc.	28,785
Northern Illinois Food Bank	27,444
Diversified Foods	26,640
Country Classic Dairies, Inc.	23,796
Papa Pita Bakery	23,701
Salt Lake Community College	23,283
Salt Lake County Libraries	23,060
Brent Redmond Logistics	22,637
GoldStone Leasing	22,272
Quality Produce	20,633
Barilla America	20,064
Jan Turner	19,812
Hershey Company	19,589
LDS Wards/Stakes Food Drives Total	19,553
Halbersleben Trucking	18,920
Dawn Food Products, Inc.	18,778

Commercial Donors

Donors	Pounds
Brighton Ski Resort	18,104
HC Brill Company	18,019
Tropicana North America	17,777
Little Dutch Boy Bakeries, Inc.	17,701
US Foodservice	17,238
Rocky Mountain Eggs	16,426
Discover Card	15,126
Clark Wholesale Produce	14,874
America First Credit Union	14,850
Schreiber Foods	14,276
Chaz Roberts	14,274
Overstock.com	13,896
American Distribution	13,771
Gossner Foods	13,440
The Proctor and Gamble Company	13,422
Sara Lee Bakery Group	12,300
Macey's	12,259
Pilgrims Pride	12,240
Granite School District	12,226
Oregon Food Bank	12,192
C.R. England	12,000
Horizon Snack Foods	11,600
Fitzpatrick Brothers	11,561
Corazonas	11,490
Cream O'Weber Dairy, LLC	11,292
Reser's Fine Foods, Inc.	10,908
Growers Direct	10,890
Johnsonville Sausage, LLC	10,855
Daily's Foods	10,805
Nicholas and Company	10,560
Muir - Copper Canyon Farms	10,044
Alta High School	9,613
Fort Herriman Middle School	9,610
Inovata Foods	9,568
Foothills Elementary	9,348
Green River Companies	9,096
IHOP	9,070
Southeast Missouri Food Bank	8,749
Taffy Town, Inc.	8,734
Riddley's Family Market	8,728
Utah State University	8,662
Salvation Army	8,621
IHC	8,534
Gary Christensen	8,294
Operation Give (MLG Whse)	8,155
JC Penney	8,136
Dollar Tree	7,987
Curves for women	7,700
M&M Distributing	7,628
Globus Relief	7,544
Cuban Cigar	7,378
Ebay Inc.	7,330
Food Bank of Northern Nevada	7,328

Donors	Pounds
Geoff Smart	7,169
United Stationers	7,108
Nels Anderson	6,871
City Market #410	6,850
Martin Brower	6,693
BD Medical	6,668
UnitedHealth Group	6,632
Minute Maid	6,578
Utah County Jail	6,440
Bezzant's Orchard	6,431
Lone Peak Stake	6,264
Harward Farms	6,214
Schiff Nutrition International	6,154
Manuel's Fine Foods	6,098
Saleswest Marketing	6,079
Knight Transportation	6,067
Patti Richards	5,818
Rigtrups Egg Farm	5,664
Schwan Foods	5,559
Dilworth Elementary	5,400
Tyson Foods	5,293
Bee Sweet Citrus	5,280
James Clark & Son's Trucking	5,256
Snowbird Resort	5,252
Pepperidge Farm	5,231
Brent Olenik	5,170
Elk Ridge Middle School	5,091

Food Drive

Scouting For Food	507,447
Anonymous Individual Donor	383,692
NALC	363,725
Jiffy Lube	219,712
Alliance For Unity	196,007
HAM Food Drive Smith's	40,597
Smith's Gift of Giving	25,350
Park City Turkey Drive	14,446
Disney on Ice	11,756
Bonneville Jr. High	8,674
BSA Troop Food Drives	5,321
Albion Middle School	5,142

Food Pantries

Box Elder Food Pantry	
Cache Community Food Pantry	
Bountiful Community Pantry	
Brigham City Pantry	
Community Action Services	

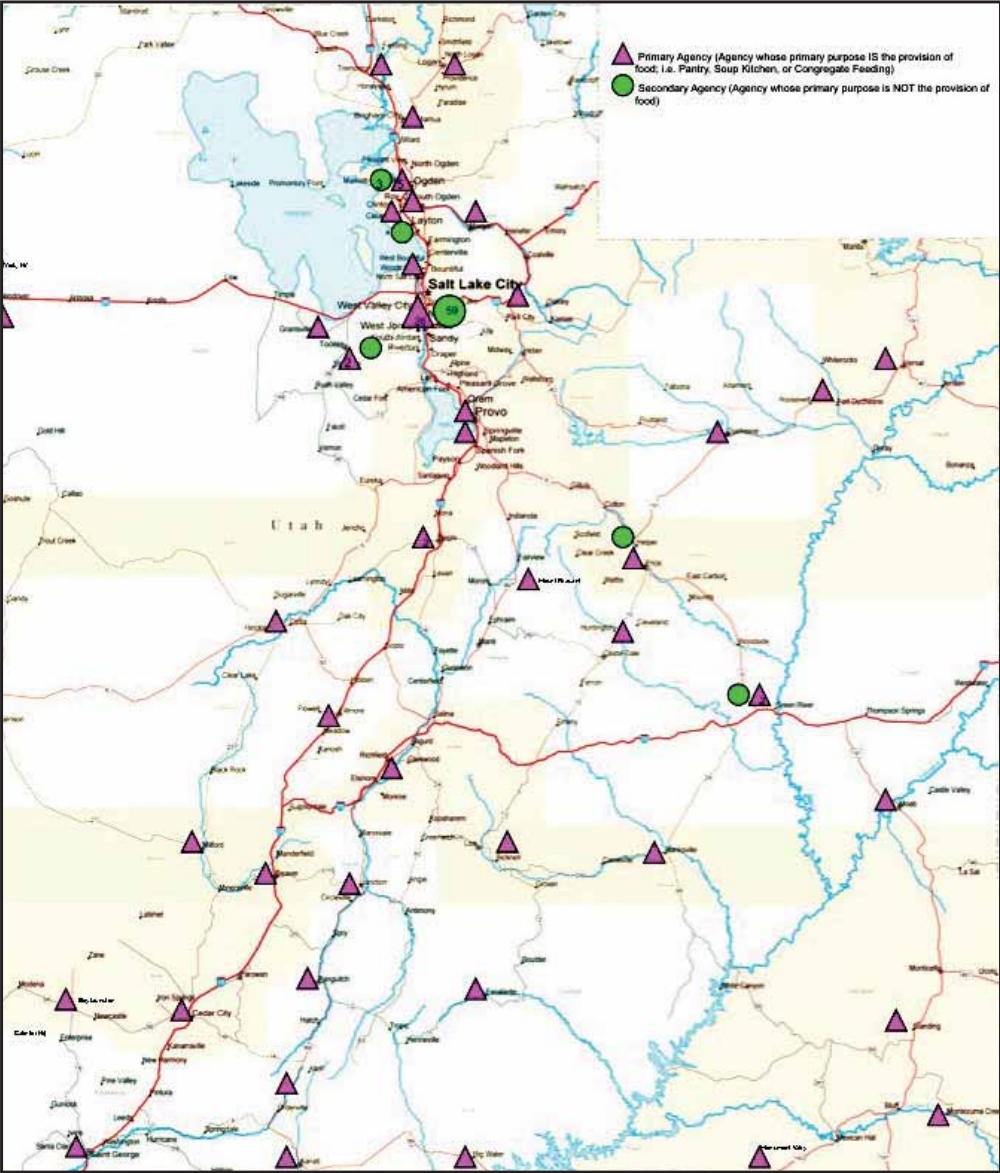
Government

USDA	6,171,005
------	-----------



UTAH FOOD BANK







UTAH FOOD BANK

Statewide Locations of the Utah Food Bank



Utah Food Bank 2010:

Finding local solutions to the growing problem of hunger

Hunger became a far too frequent companion for an increasing number of individuals and families throughout Utah in 2010. The impact of global and national events was immediately felt by Utah's economy and its people. World food prices rose by 29% in 2010, and the sweep of recession brought the United States' unemployment rate to 9.8%, and Utah's jobless rate rose to 7.1%. Utah Food Bank approached the challenges that hunger posed with renewed vigor and innovation, and with an even keener eye toward cost and resource efficiency. Utah Food Bank was able to increase its statewide distribution of food by 20%, distributing 30.8 million pounds of food to Utah's hungry in 2010.

One of the ways in which increased need was met was with the Commodity Surplus Food Program (CSFP). The purpose of CSFP is to improve the health of low-income pregnant and breastfeeding women, infants, children up to age six, and elderly people at least 60 years of age by supplementing their diets with nutritious United States Department of Agriculture commodity foods. CSFP is a federally funded program that is now locally managed by Utah Food Bank. Utah Food Bank orders and stores product, packs the boxes and then distributes these boxes statewide. Currently, 1,725 households receive CSFP boxes through Utah Food Bank, with the goal of more than 2,800 households served in the future years.



Expanded capacity, made possible by the finalization of Utah Food Bank's capital campaign and expansion project, has and will continue to improve the amount and quality of food. A freezer and refrigeration unit three times the size of that at Utah Food Bank's previous site meant larger amounts of fresh and frozen foods, with higher nutritive values, could be conserved until ready for distribution.

This is just one of the advantages of the new Utah Food Bank facility in providing more food to more recipients in 2010.

The Mobile Food Pantry was another program that Utah Food Bank expanded during 2010. Once each month, a Utah Food Bank delivery is set up at a pre-designated site, such as a community center parking lot, to distribute food boxes. Four new Mobile Food Pantry sites were added during 2010, bringing the total number of sites to 23. These additions resulted in a 485,667-pound increase in distribution. At an estimated weight for one meal at 1.28 pounds, 379,427 more meals were made available. Appeals for broader public participation in food drives, maximum contributions cultivated from national and local providers by Utah Food Bank staff, and Utah's caring communities were all factors in increasing the availability of Mobile Food Pantries to areas of the state most stricken by hunger. While great strides were made by these and other efforts by the Utah Food Bank in 2010, the crisis has not ended and the work is not complete. Utah Food Bank dedicates itself to continued responsiveness to the changing climate of human need.

Kids Cafe

Kids Cafe offers balanced meals to children at after-school sites where 50% or more of the children qualify for reduced-price or free lunches—those who are in greatest need. The objectives of the program are twofold: first, to ensure that the children most vulnerable to hunger receive an evening meal; and second, to provide balanced nutrition in each meal served. Food is prepared and meals are cooked by the chef in the larger Kids Cafe kitchen at Utah Food Bank's building, and then transported to each after-school site. Children receive Kids Cafe meals several times during the week and they are welcome to take seconds. But each meal does more than satiate hunger. Clinical studies have proven that children who experience inadequate nutrition are more likely to develop cognitive, physical and social challenges than their better-fed counterparts. It is known that nutritious meals served at Kids Cafe provide an advantage that might not otherwise exist.

Actual: FY 2010: 221,237 Kids Cafe meals served at 19 sites



BackPack Program

The BackPack Program helps alleviate child hunger in Utah by providing children with nutritious and easy-to-prepare food at times when other resources are not available, such as weekends and school vacations. The program provides

backpacks filled with food that is child-friendly, nonperishable, and easily consumed. Backpacks are discreetly distributed to children on the last day of school before the weekend or holiday.



Senior Food Box Program

The Food Box Program assists low-income seniors in Utah's communities who struggle to meet even basic needs due to limited income. These seniors often forego a meal or several meals in order to save dollars for prescription costs, utility bills and other expenses. The Senior Food Box program of Utah Food Bank provides a 7- to 9-day food supply in a box delivered monthly. Many seniors report their biggest comfort is the caring visit from the delivering volunteer each month.

Actual: FY 2010: 26,472 Food boxes delivered to 2,447 clients

UTAH FOOD BANK AND UTAH FOOD BANK FOUNDATION
COMBINED STATEMENT OF ACTIVITIES
FOR THE YEAR ENDED JUNE 30, 2010
With Summarized Financial Information for 2009

	2010			Total 2009
	Unrestricted	Temporarily Restricted	Total	
Public Support and Revenues:				
Public Support				
In-Kind support:				
Volunteers	\$ 44,099	\$ -	\$ 44,099	\$ 112,544
Advertising	212,183	-	212,183	334,134
Food	45,034,264	-	45,034,264	32,401,391
Other supplies and equipment	42,019	-	42,019	123,015
Total In-Kind Support	45,332,565	-	45,332,565	32,971,084
Direct Contributions:				
Contributions	2,931,915	334,324	3,266,239	3,790,359
Contributions - direct solicitations	1,581,596	11,086	1,592,682	1,650,518
Grants	944,023	120,000	1,064,023	3,886,247
United Way	319,056	-	319,056	332,249
Total Direct Contributions	5,776,590	465,410	6,242,000	9,659,373
Revenues:				
Government contracts	1,102,572	154,234	1,256,806	1,086,426
Rental income	-	-	-	252,000
Interest income and other	32,984	-	32,984	48,020
Net assets released from restrictions	1,542,967	(1,542,967)	-	-
Total Revenues	2,678,523	(1,388,733)	1,289,790	1,386,446
Total Public Support and Revenues	53,787,678	(923,323)	52,864,355	44,016,903
Program Expenses				
211 and senior services	931,532	-	931,532	1,024,481
Food programs	492,578	-	492,578	477,867
Logistics	47,928,028	-	47,928,028	32,440,627
	49,352,138	-	49,352,138	33,942,975
Support Expenses				
Development	2,093,967	-	2,093,967	2,004,600
Capital campaign - fundraising	91,747	-	91,747	517,392
Capital campaign - building	186,083	-	186,083	426,645
Management and general	1,630,773	-	1,630,773	1,267,075
Total Expenses	53,354,708	-	53,354,708	38,158,687
Change in Net Assets	432,970	(923,323)	(490,353)	5,858,216
Net Assets At Beginning of Year	10,875,591	1,867,989	12,743,580	6,885,364
Net Assets At End of Year	\$ 11,308,561	\$ 944,666	\$ 12,253,227	\$ 12,743,580

The accompanying notes are an integral part of these financial statements.

Donors \$50,000 - \$400,000

R. Harold Burton Foundation
C. R. England Inc.*
Daniels Fund
Katherine W. and Ezekiel R. Dumke, Jr.
Foundation
George S. and Dolores D. Eccles
Foundation
Wal-Mart Corporate
C. Scott & Dorothy E. Watkins Charitable
Foundation
Zions Bank

Donors \$25,000 - \$49,999

American Express
American Research Bureau Inc.
Edward L. Burton Foundation
Chevron Salt Lake Refinery
Willard L. Eccles Charitable Foundation
Feeding America
Legacy Global Foundation, Inc.
Mills Publishing*
Maria J. M. Pia
Rio Tinto Services Inc.
Smith's Management Corporate
UBS Bank USA
Utah Families Foundation
Wells Fargo

Donors \$10,000 - \$24,999

Adobe Systems Incorporated
Anonymous Donor
Archer Communications*
Fredrick H. Barth Foundation
B.W. Bastian Foundation
Frances W. Burton Foundation
C. R. England Inc.
CIT Bank
Discover
Marriner S. Eccles Foundation
Henry W. and Leslie M. Eskuche Foundation
Friends of Gary Herbert -
Political Action Committee
Gerber Construction Inc.
The Grainger Foundation
Hansen, Barnett & Maxwell P.C.*
Dan and Jody Harris
Richard K. and Shirley S. Hemingway
Foundation
Kennebott Utah Copper Visitors Center
Charitable Foundation
Key Foundation
Mechanical Service & Systems, Inc.
Merrick Bank Corporation
Barry and Kathy Mower
MSI Systems Integrators/
Premier Corp Events*
Gayle N. Olsen
John and Heidi Pestana
Points Of Light Institute
Pride Transport, Inc. *
Qwest Foundation
The Salt Lake Tribune
Sara Lee Foundation
Share Our Strength

Sonic Innovations
U of U Bookstore
U of U Hospital & Clinics
University of Utah - Rivalry Week
Utah State Employees Charitable Fund
Van Cott, Bagley, Cornwall & McCarthy
L.J. and Jeanné Wagner Charitable Foundation

Donors \$5,000 - \$9,999

Adobe Systems Incorporated*
American Express Charitable Fund
Anonymous Donor (3)
Ashton Family Foundation
Ruth E. and John E. Bamberger
Memorial Foundation
BD Medical Systems
The Boeing Company
Brashers Salt Lake Auto Auction
Kathy and Gary Bryden
Burton Lumber Corporate
Carquest Charitable Foundation
Castle Foundation
Coldwell Banker Residential Brokerage
Community Health Charities
Control Equipment Company
Crescent Electric Supply
Tiffany Davis
Lawrence T. and Janet T. Dee Foundation
C. Victor Dover
Donald B. Fronce+
Aaron and Tiffany Garrity
Hidden Valley Country Club
George and Sara Hofmann
The Thomas A. and Lucille B. Horne
Foundation
Reggie Huffman
Richard and Susan Jacobsen
JPMorgan Chase & Co.
Michael and Alicyn King
KSOP Inc.
Lake City Trucks
Janet Q. Lawson Foundation
Parr Brown Gee & Loveless
Roger and Mary Lowe
James Macintyre & Elizabeth Joy
Herbert I. and Elsa B. Michael Foundation
Steven J. Nelson
Todd Olsen
The Pampered Chef
Redi-Therm Recycling Inc.
Regence Employee Giving Campaign
Regence
Richard, Brandt, Miller & Nelson
Stan Rosenzweig and Ronna Cohen
Jeffrey and Susanaffle
Semnani Foundation
Seniors Blue Book*
Silicon Valley Community Foundation
The Skolnick Foundation
Software Technology Group
Thomas and Kristin Stockham
Target Corporation
R-J Taylor Welding and Construction
Tim Dahle Imports
Richard Trentman

Varian Associates
Sam Viersen Family Foundation, Inc.
Webb Audio Visual Communication*
Wells Fargo Investments
West Rim Capital Advisors, LP
Robert B. Wiggins

Donors \$2,500 - \$4,999

A-1*
Albion Financial Group
Angel's Hands Foundation
Anonymous Donor (3)
Arches Natural Products Inc.
ARUP
James and Margaret Avent
Babcock, Scott & Babcock, P.C.
Austin Bankhead
Daniel and Sheila Barnett
BD Medical
The Gail L. and Arthur E. Benjamin
Foundation
Daniel L. Berman
BOMA of Salt Lake
Drew Browning and Judy Brady
Leonard W. Burningham
Frances W. Burton Foundation
C R Bard Foundation Inc.
Cache Valley Electric
Paul Q. Callister Foundation, Inc.
William Choplin and Nancy Nowak
Tracy Christman
Clearlink Technologies, LLC
Datamark
The Dorsey & Whitney Foundation
Thomas and Susan Ellison
The Fellowship
James and Tammy Felt
Ellen F. Fisher
Herman and Lauri Franks
Fratelli Ristorante
Gibbons Foundation
James Gilland
Global Impact
Stephanie Goodliffe
GreenFiber Salt Lake City, Inc.
Nathan Hadfield
Martin Hollingsworth
Sarah and Matt Hollingsworth
Steven and Patricia Horton
Intermountain Healthcare
Interwest Paper, Inc.
Jane L. Kemp
KeyBank Corporate
Robert and Kathryn Kluge
June and Frank Knight
John and Dora Lang Charitable
Foundation
Chris and LeeAnne Linderman
Macy's West
James and Toria Magleby
Magleby & Greenwood, P.C.
The Masonic Foundation of Utah
Microsoft
Nancy C. Miller
Mountain View Christian Assembly of God

Nate Wade Subaru*
 Nelson Laboratories Inc.
 Network for Good
 Overstock.com
 Pacificorp
 Parley's 7th Singles Ward
 Carolyn A. Pedone and John Rose
 Brad Petersen
 Brad Powell
 Print2Day
 Questar Volunteer Team
 Questar Gas Company
 Lynn J. Rasmussen and Hallee Wiece
 Rasmussen Landscapes*
 Raymond Family Foundation
 Douglas Reilly
 Rocky Mountain Power Foundation
 N. Leone Rogers
 Salt Lake Magazine*
 Sam's Club Foundation
 The Neal and Sherrie Savage Family Foundation
 Schatz, Anderson & Uday, LLC
 SCS Inc.
 Spectrum Field Services, Inc.
 Stacy and Witbeck, Inc.
 State Farm Great Salt Lake Agency Field Office
 Mark and Marianne Sullivan
 Swire Coca-Cola, USA
 Dee and Barbara Taylor
 Douglas and Marie Taylor
 Tucanos UT LLC
 Scott and Dorina Turley
 Terry and Julie Uhrig
 Ultradent Products Inc.
 US Bankcorp Foundation
 Lamar Van Wagenen
 Vanguard Golf Management Group
 Dennis and Rebecca Vasquez
 Veracity Solutions, Inc.
 Erie and Linda Walker
 Warner Truck Center
 Waterford Research Institute
 Wells Fargo Community Support Campaign
 Wells Fargo
 Wheeler Foundation
 Keith and Cheryl White
 Zellerbach*

Donors \$1,000 - \$2,499

ACBL Unit 386
 Advance Fiber Optics
 Air-Rite Manufacturing LLC
 All Saints Episcopal Church
 Allen's Masonry Company, Inc.
 James and Holly Allison
 Allstate Construction
 Alta High School
 Alta Meadows Health Care
 Alta Meadows Medical

American Fork Clinic Employee Fund
 Chris Anderson
 G. and Ida Lee Anderson
 Anderson Hatch Foundation
 Kathryn J. Anderson
 Anonymous Donors (19)
 Theodore and Lois Arnow
 William M. Armstrong
 ATK Thiokol Propulsion
 Atkinson Electronics Inc.
 Dana and Dave Baird
 Lewis and Nancy Baker
 Bamberger - Allen Health and Educational Foundation
 Bangert Crossing
 Gordon and Kristin Barland
 Randy and Melissa Barnhisel
 Barry Equipment Company
 Nancy Barthelmess
 Barbara Baskett
 Herman J. Baumann Jr.
 Elizabeth A. Beck
 Carol Beckwith
 Raymond and Dale Berry
 Arlene Billings
 William and Diane Bohling
 Van Bohne
 Henry and Sally Boland
 Kirk and Susan Boman
 The Bonnemort Foundation
 Randy and Robin Booth
 Joel S. Bown and Marilyn Nowell-Bown
 Gregory Boyce
 Rodney H. & Carolyn Hansen
 Brady Charitable Foundation
 Dana and Mark Brennan
 Eleanor L. Brennan
 David and Carol Breslauer
 Bridgewater Associates
 Imogene Brown
 Matt and Sheila Brown
 Richard Brown and Pamela Jowett
 R. Craig and Kathleen Bryson
 Jerrold and JoAnne Burgess
 James and Jean Burns
 Philip and Anita Burns
 Terrie Cannon
 Robert and Robin Cannon
 David and Susan Carlebach
 Johnnie and Carol Carpenter
 Brad Carter
 The Robert S. Carter Foundation
 Cascade Shadows, Inc.
 John Catasca
 Sean and Toni Cavagnaro
 CCIM Utah Chapter
 Charity Denim
 J. Peter and Janet Chase
 Sam and Elsie Chelemes
 Lee and Jill Christensen
 Christiansen Drywall
 The Church of Jesus Christ of Latter-day Saints Foundation
 Church World Service

Ciber
 Joan Coles
 College of Healthcare Information
 Community Volunteers of Utah
 Rulon Cook
 Robert C. Cooksey
 Cottonwood Title Insurance Company
 Randy and Claudean Cox
 Sarah Beth Coyote Foundation
 Robert and Maria Craig
 Crown Jewelers & Pawn, Inc.
 John and Vicki Crum
 Bruce and Marsha Cummings
 Cindy Dahle
 F. Ardith Dalton
 Allan and Suzanne Daly
 DCM Finance LC
 John and Annette Delaney
 Keith and Karen Diehl
 Docu Prep, Inc.
 Jamie Dodge
 Debora L. Donahue
 Matthew and Nancy Dorny
 Paul and Terrell Dougan
 Robert and Christinia Drennan
 eBay, Inc.
 Katie Eccles
 Jaime Edmund
 Galin and Dawn Edwards
 Gerald and Inell Edwards
 EFI - Electronics Corp
 D. Jeffrey and H. Patricia England
 William and Fern England
 Corey and Liz Erickson
 Erik and Uzo Erlingsson
 Amy Esser
 FedEx
 John + and Cynthia Fehr
 Feinstein Foundation
 George and Debra Felt
 Fidelity Ventures, Inc.
 Fieldstone Foundation*
 Fitness Equipment Services
 Roger and Karen Ford
 Thomas and Carol Frazer
 Peter Freed
 Funding Passion and Love Foundation
 Elizabeth Gagne
 Roy Gandolfi
 Jennie Garner
 Max P. Gerber
 William and Barbara Gibbons
 James and Elizabeth Gilpin
 Jana L. Glass
 Golden Braid Oasis Cafe, LLC
 Goldman Sachs
 Brooke and Sally Grant
 Scott and Lori Green
 Robert Gregory
 Robert and Linda Grow
 Stuart and Janice Gygi
 David and Christine Hailey
 Kameron and Cynthia Haller
 William H. Hanewinkel

Michael S. Hanks
 G. Duggan and AnnMarie Hannon
 Douglas and Toni Hansen
 Hansen, Allen & Luce, Inc.
 Carol and John Hanshaw
 Blaine and Barbara Harmon
 Laurie S. Hart
 Mark and Pam Hashimoto
 Frank K. Heath
 Ilene Helfrich
 Henry & Patrice Hemingway
 Foundation
 Jay and Natalie Hickenlooper
 Jeffrey and Kathryn Higgs
 Elmer Hite
 William Hoban
 Marilyn A. Hoffman
 Patricia Hogan
 Holland & Hart*
 Dan and Mischelle Hollister
 Jay R. Holt
 Oren Hopkins
 W. Chandler Horsley
 Stephen P. Horvat
 Steve and Laura Houston
 Humana Inc.
 Huron Consulting Group, Inc.
 Jeffrey and Susan Hutchings
 Gilbert and Thelma Iker
 Innovision Property Group
 Inspection Services Inc.
 Institute of Religion
 Gordon Irving
 Theodore and Charlotte Jacobsen
 David and Marina James
 Janet Gray Dance Studio
 Boyd and Beverley Jensen
 Scott Jensen
 Anne and Conrad Jenson
 Ron and Janet Jibson
 M. Craig Johns
 Eric C. Johnson
 Johnson Controls
 Jordan Landing Management
 Jordan River Construction
 The Joyce Family Fund
 Anonymous Donor
 JustGive.org
 Susan Kaercher
 Kamcor Inc.
 Wes and Jean Keller
 Kerry Kelly and Ross Whitaker
 Kenneth and Laura Kelter
 Ross and Nancy Kendell
 Maurice V. Kenney
 Norman W. Kettner
 Janet and Adamant King
 Greg Kingdon
 Troy and Melissa Knighton
 William and Christina Kohlburn
 Beatrice F. Kroesche Foundation
 Lakeview Medical Staff
 Larry H Miller Used Car Supermarket
 Alan and Leslie Layton
 Layton High School
 LD Bowerman Investments, LLC

Legacy Learning
 Steven and Heidi Leithead
 Kim Leung
 Dennis G. Lewis and Jhan Turner
 Stephen and Janet Lewis
 Kris Liacopoulos
 C. Craig and Patrea Liljenquist
 David and Pamela Lindsey
 Joseph and Jann Linza
 Edward Loosli
 Derick Loyola and Lidia DiLello
 LynRus Aluminum Products
 Don R. Mabey
 Macy's Foundation
 Blake Madsen
 Management & Training Corp
 Mark Family Foundation
 Arline Markosian
 Bruce Markosian
 Marriott International, Inc.
 Dorothy Martin Charitable
 Foundation
 Robert and Leanne Mason
 MAZZA LLC
 Gregory B. McComas and Vilija
 N. Avizonis
 Ted McKay
 Patricia and Bob McLean
 Jacqueline and Jeffery Mc Mullin
 Teru Ann McPhie
 Robin C. Mead
 Meadowbrook Ladies Bowling Assoc
 Peter and Catherine Meldrum
 Kenneth and Kimberly Menlove
 Merck Partnership for Giving
 Merrill Lynch Bank USA
 Merrill Lynch & Co Foundation, Inc
 Ernamarie Messenger
 Paul and Susan Messerly
 Metal Management, Inc.
 Edith Miller
 Robert and Nancy Miller
 John and Anne Milliken
 Mills Real Estate
 Martin and Virginia Mitchell
 Mitchell Acoustics Inc.
 Marilyn Modling
 Susanne Monsen
 MOOG Aircraft Inc.
 Brent L. Moosman
 Alan and Marilyn Morris
 John and Margaret Morrison
 Keith and Leslie Motley
 David S. Murdock
 Doug Murray
 David Muskovitz
 Name Tag, Inc.
 National Auto Care Corp.
 Nebeker Family Foundation
 Craig Neeley
 Edward Nelson
 Mark and Shelley Nelson
 Nicholas and Company
 NMEC Leasing
 Earl and Irene Nordbrock
 Northrop Grumman

John O'Connell
 Martin and Rosalind O'Loughlin
 Merlin and Susan Olsen+
 Michael and Sherie Olsen
 Perry Olsen
 Ferron and Donna Olson
 James and Debra Ann Olson
 Allyn and Cheryl Orme
 Ann and Steven Ostler
 O. Don and Barbara Ostler
 Our Saviour's Lutheran Church
 Amy Owen
 Donald and Eleonore Page
 Page Brake Company Inc.*
 James and Joy Patterson
 R. Kip and Terri Paul
 Mary Paulsen
 Paulus Hair Restoration Group
 Paxton Production Tools
 Peder J. Pedersen and Mary E.
 Domeier
 Marta J. Petersen
 Robert and Zina Peterson
 The PI Foundation, Inc.
 George and Ann Pingree
 Pitney Bowes Bank
 PODS*
 Frederick and Anna Policelli
 George and Dixie Powell
 Richard and Beth Pratt
 D. J. and Laurie Priano
 Mr. & Mrs. Richard Price
 Pride Transport, Inc.*
 Joan Proctor
 Prudential Foundation
 Q & A Reporting, Inc.
 David E. Quinney
 Rafati Foundation
 John and Sharon Ragsdale
 Rick and Helen Rappaport
 Lise Rauzi
 Redwood Endodontics
 Franklin D. Richards
 Rico's Mexican Catering
 Bea Rigby
 Diane Rindlisbacher
 Katie and Shaun Ritchie
 Riverton Motors Group
 Lynn Robbins
 Ian Robertson and Janine Wittwer
 Kendall and Cara Robins
 James and Janice Robinson
 Rock for a Remedy
 Romney Lumber Company
 Dale Rond
 Roofers Supply Inc.
 D.N. 'Nick' and Phyllis Rose
 Erma H. Rosenhan
 Ross Charitable Support Founda-
 tion
 Rotary Club of Sugarhouse
 Salt Lake Print LLC*
 Robert and Laurie Sanderson
 Sandy Chamber of Commerce
 Nancy Saxton
 Paul and Karen Schettler

Samuel and Karen Schroyer
 Steven and Katherine Scullion
 Select Comfort Corp
 Select Portfolio Servicing, Inc.
 Sharon L. Seppi
 Jack and Donna Serina
 Sallie Shatz
 Sheldon Peck Orthodontics
 Scott Shelton
 Scott D. Sheridan
 Mark and M'Liss Shurtleff
 James and Tina Simkins
 Sizzling Platter Inc.
 Carol Jean Smith
 Kelly and Barbara Smith
 Smithfield Foods, Inc.
 Amy F. Sorenson and Blair Hodson
 James Sorenson
 Sparcs Foundation
 S. Philip and Lola Speckart
 Karen J. Stam
 Standard Optical
 Mary Stanley
 Brian Stapleton
 James Steele
 Val and Julie Stokes
 Mary Stoneman
 Susan Stormann
 Strong and Hanni
 G. Yvonne Stroup
 Structural Integrity Assoc. Inc.
 Steven and Connie Sturzenegger
 Jason Summers
 Summit Financial Resources
 Jon Sundin
 Supersonic Car Wash
 The Sweet Tooth Fairy*
 T.D. Williamson, Inc.
 Fred and Irene Tannenbaum
 Charles and Dianne Tate
 The TE Foundation
 Volker Teller
 Tesoro Refining Company
 Kathylyn Thatcher
 John R. Thomas
 ThomasARTS
 A. Lear Thorpe
 Thusm, Inc.
 TOSA Foundation
 William Traeger
 Lawrence and Ellen Trainer
 Wayne Trenbeath
 Karen Turner
 Ultra Clean Carpet Services
 United Jewish Community
 Endowment Trust of Utah
 University 15th Ward
 Wanda S. Updike
 Utah Bankers Association
 Utah Commercial Contractors Inc.
 Utah Drivers License Division -
 Administrative Office
 Utah Floor Cover Association

Utah Food Industry Association
 Utah Highway Patrol/Public Safety
 Utah Tank & Trailer*
 Utah Westerners
 Gerrit Van Bruggen+
 Vanco Warehouse
 Ione Van Wagenen
 Veloy and Carol Varner
 Verite, Inc.
 Joseph and Cynthia Walkowski
 James and Erma Wallace
 Andrew and Kathleen Wallman
 Wal-Mart Store #2207
 Wal-Mart Supercenter #2307
 Wal-Mart Supercenter #3568
 Wal-Mart Neighborhood Market #5120
 Wal-Mart Supercenter #5233
 Wal-Mart Supercenter #5350
 Terry and Sandra Ward
 Don and Megan Wardell
 Franklin and Gayle Wareham
 Jean Anne Waterstradt
 Wayne and Lesley Webster
 Thomas and Jennifer Welding
 Wayne and Laura Welling
 Michael and Leslie Wellman
 Wells Fargo Equipment Financial
 Ross and Joan Whicker
 B & H Whitney Felt Foundation
 Glen and Kay Wiese
 Russell and Sara Wilcox
 Scott and Alice Williams
 Patricia J. Winmill and Bryce
 Panzer
 Curtis and Gail Winterfeld
 Julie Wolfe
 William and Judith Wolpert
 T. Brent Wolsey
 David and Lynette Woodward
 Eugene and Janet Worth
 Wright Express Financial
 Services
 Ed Wycherley
 XTRA Leasing*
 Andrea Young
 Josh and Susan Zimmerman

*Designates In-Kind Donation
 +Deceased

Utah Food Bank Partner Agencies

Aids Foundation
Apostolic Assembly of Layton
Ark of Little Cottonwood
Ashley Valley Pantry
Avalon House
Beaver Care & Share
Beryl Junction Care & Share
Best Friend Animal Society
Bible Baptist Church
Bountiful Community Pantry
Bountiful Community Pantry
Box Elder Food Pantry
Boys & Girls Club - Capitol West
Boys & Girls Club - Heartland
Boys & Girls Club - Lied Center
Boys & Girls Club - Midvale
Boys & Girls Club - Murray/
South Valley
Boys & Girls Club - Tooele
Boys and Girls Club - Weber/Davis
Cache Community Food Pantry
Carbon County Food Bank
Carbon County Senior Food Box
Catholic Community Services -
Ogden
Catholic Community Services -
Salt Lake
Center of Hope
Central City Community Center
Central Utah Food Sharing -
Bicknell
Central Utah Food Sharing -
Delta
Central Utah Food Sharing -
Fillmore
Central Utah Food Sharing -
Hanksville
Central Utah Food Sharing -
Junction
Central Utah Food Sharing -
Mount Pleasant
Central Utah Food Sharing -
Nephi
Central Utah Food Sharing -
Richfield
Centro De La Familia
Children's Center East
Christian Center of Park City
Colors of Success
Community Action Services and
Food Bank
Crossroads Urban Center
DDI Vantage - Main
DDI Vantage - West
Dixie Care & Share
Duchesne County Food Pantry
Emery County Food Bank
Family Connection Center -
Food Bank
Family Support Center - Sugarhouse
First Step House
Flaming Gorge Food Pantry
Garfield Care & Share
Good Samaritan Program
Grace Bible Church
Grand County Food Bank
Granger Christian -
Community Church
Granstville Community Action
Program
Grantsville First Baptist Church
Green River Community Center
Green River Food Bank
Guadalupe Education Program
Holy Cross Ministries
House of Hope - Salt Lake
House of Prayer
Iglesia Apostolica
Iglesia De Jesucristo
Indian Walk-In Center
Iron County Care & Share
John Taylor House
Kane County Care & Share
Kearns Children's Center
Kearns First Baptist Church
Kid's World
Lutheran Social Services of Utah
Magna Community Action Program
Milford Care & Share
Ministerios Amor en Accion
Montello Food Pantry
Murray Community Action Program
Neighborhood House
Neighborhood House
Nephi First Baptist Church
New Jerusalem Seventh Day
Adventist Church
Northwest - Community Action
Program
Nueva Esperanza Community
Service
Odyssey House - Adolescent
Odyssey House - Adult
Odyssey House -
Women and Children
Ogden Seventh Day Adventist
Church
Ogden Spanish Seventh Day
Adventist Church
Ogden Weber Community
Action Partnership
Panguitch Care & Share
Reach of Salt Lake
Rescue Mission - Salt Lake
Richfield Backpack
Rise, Inc.
Ronald McDonald House
Salt Lake City Mission
Salvation Army - Ogden
Salvation Army - Salt Lake Pantry
Salvation Army Rehabilitation
Serenity House
Silver Sage Senior Center Pantry
SLC 5 Foursquare Church
Sorenson Multi-Cultural Center
South County Community
Action Program
South Valley Sanctuary
SPLORE
St. Andrew Catholic Parish
St. Anne's Center
St. Joseph the Worker
St. Mark's Hildegard's Pantry
St. Mary's Home for Men
St. Paul's Food Pantry
St. Therese's Food Pantry
St. Vincent De Paul
Sunrise Metro Housing
Taylorsville Food Pantry
The Road Home
The Road Home - Overflow
Shelter
Tooele County Food Bank
Tooele First Baptist Church
Transitions - Bluff
Transitions Pantry - Blanding
Transitions Pantry - Montezuma
Creek
Transitions Pantry - Monument
Valley
Tremonton Food Pantry
U.S. Dream Academy
Utah Animal Adoption Center
Utah Birth Defect Network
Utah Foster Care
Utah Youth Village
Victory Outreach
VOA - Day Treatment Center
VOA - Detox Adult
VOA - Homeless Outreach
VOA - Homeless Youth Re-
source Center
VOA - Transitional Home
VOA - Women and Children
Wasatch Presbyterian
Wendover Christian Fellowship
West Jordan Care Center
West Ridge Academy
West Valley Apostolic Church
West Valley Community Action
Program
West Side Food Pantry
Youth City
Youth Impact
YWCA

CSFP Sites

CSFP - Catholic Community Services - Ogden
CSFP - Family Connection Center
CSFP - Head Start - HJS SLC
CSFP - Head Start - Temporary Shipment
CSFP - Head Start JRR SLC
CSFP - Head Start Midvale
CSFP - Head Start Murray Red
CSFP - Head Start Palmer Court
CSFP - CCH Home Base West
CSFP - Magna Community Action Program
CSFP - Murray Community Action Program
CSFP - South County Community Action Program
CSFP - West Valley Community Action Program

Kids Cafe

Capitol West Boys and Girls Club
Central City Boys and Girls Club
Community First
David Gourley Elementary
Glendale Middle School
Green River Community Center
Hser Ner Moo
Indian Walk-In Center
Lied Boys and Girls Club
Lincoln Granite
Midvale Boys and Girls Club
Mountain View
Northwest Middle School
Oquirrh Hills Elementary
Roy Boys and Girls Club
Sorenson Community Center
Tooele Boys and Girls Club
Utah Food Bank - Kids Cafe
VOA - Homeless Youth Resource Center
Weber/Davis Boys and Girls Club
Woodrow Wilson Elementary
Youth Impact

BackPack Program

Weber/Davis Boys and Girls Club
Blanding Backpack
Edison Elementary
Indian Walk-In Center
Lincoln Elementary

Mountain View Elementary
Riley Elementary
U.S. Dream Academy

Senior Food Box

Capital Villa
Compass Villa
Dominguez Apartments
Escalante Apartments
Family Connection Center
Senior Food Box Program
Friendly Neighborhood Center
Gerald Wright Villa
Glendale Senior Center
Grace Mary Manor
Grantsville Senior Housing
Hamilton Apartments
James E. Keir
Jerrald Merrill
Lincoln Towers
Lowell Apartments
Majestic Meadows
Martha's Terrace
Morgan County Senior Center
Multi-Ethnic Senior Center
Phillips Plaza
Preston Apartments
Price Senior Center
Romney Plaza
Somerset Gardens
South Lake Villa
Tooele Senior Center
Utah Food Bank - Senior
Food Box Program
Valley Fair Village
Victoria Woods
Wasatch Manor
Wendover Senior Center
West Jordan Senior Center
Willow Wood Senior Complex

Mobile Pantries

Beryl Junction DROPS
Beryl Junction MFP
Bluff MFP
Cahone Mesa MFP
Caliente MFP
Dixie DROPS
Eureka MFP
Goshen MFP
Grantsville MFP
Layton DROPS
Mexican Hat MFP
Monticello MFP
Morgan County DROPS
Navajo Mountain MFP
Ogden DROPS
Oljato MFP

Palmer Court MFP
Red Mesa MFP
Rich County MFP
Richfield DROPS
Salina MFP
SLC DROPS
Wendover MFP

Kids Cafe Sites 09-10

Capitol West B&G
Central City B&G
Community First (rural)
David Gourley Elem
Glendale Middle School
Green River (rural)
Hser Ner Moo
IWIC
Lied B&G
Lincoln Granite
Midvale B&G
Mountain View
Northwest Middle School
Oquirrh Hills Elementary
Roy B&G
Sorenson
Tooele B&G
VOA Youth Center
Weber/Davis B&G
Woodrow Wilson
Youth Impact

BackPack Sites 09-10

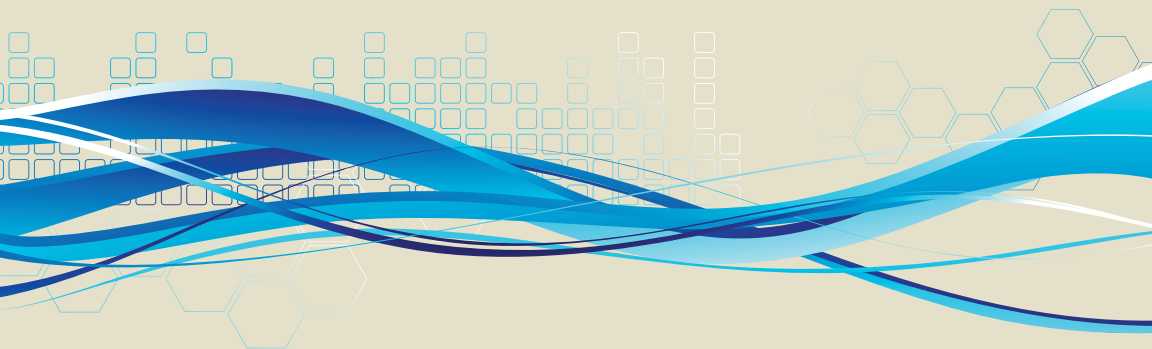
Blanding
Edison Elem
IWIC
Lincoln Elem
Mountain View
Riley Elem
Sorenson
U.S. Dream

Board Of Directors and Professional Affiliations

Susan Rather	LDS Church Welfare Services
Marsha Gilford	Smith's Food & Drug Centers
David Allred	C.R. England
Nedra Christensen	USU Extension Office
Dave Davis	Utah Food Industry Association
Carol Fineagan	EnergySolutions
Gil Fuller	USANA Health Sciences
Ric Hammond	OC Tanner - Retired
Laura Houston	Wells Fargo Bank
LeeAnne Linderman	Zions Bank
Kelly Maxfield	Questar
Richard Mecham	Rich Media Consulting
Dawn Page	Riverton Motors Group
Thomas Pierce	Sorenson Capital
Marc Probst	Intermountain Healthcare
Kimball Young	Municipal Finance

Non-Board Committee Members and Professional Affiliations

Sally Archer	Archer Communications
Alan Blackburn	KSL Television
Tracy Christman	Ernst & Young LLP
Jeff England	Pride Transport
Stephanie Horne	Zions Bank
Lee Hussey	Harmons Grocery
Kurt Kennedy	Utah Bishops' Central Storehouse
Jose Lazaro	Catholic Community Services
Russ Paskins	Nicholas & Co.
Bob Perry	Perry Construction, Inc.
Norman Robinson	Boart Longyear
Jeff Whipple	Larry H Miller Sports & Entertainment
Anne Wood	ThomasARTS
Clark Wood	Walmart





Volunteer Stats for 09-10, Highlights

The Utah Food Bank is fortunate to have continued tremendous support from the community in the form of volunteer labor. The Volunteer Department reported 108,050 hours of service from 48,786 volunteers—that equates to roughly an average of 170 volunteers per working day assisting in our fight against hunger. The volunteers originate from diverse sources including corporate groups, youth groups, church groups, community organizations, students, and individuals given court-ordered service, among others. Volunteers typically do a number of projects that help facilitate the distribution of food including sorting food drive, repackaging or relabeling food, assembling food boxes, decorating food boxes, and delivering food boxes to seniors in need.

In April we hosted our Open Hearts Helping Hands Volunteer Recognition luncheon at which the following were awarded Volunteers of the Year: Carrier Transicold of Utah (Corporate Group), Judge Memorial High School (School Group), Lifelong Learning (Community Group), and Brian Jensen (Individual).

The Utah Food Bank also continued to host many large service events this year including traditional events for Martin Luther King Jr. Day, Comcast Cares Day, United Way Day of Service, Legacy of Lowell Day, Scouting for Food, and Stamp Out Hunger food drives.



UTAH FOOD BANK



